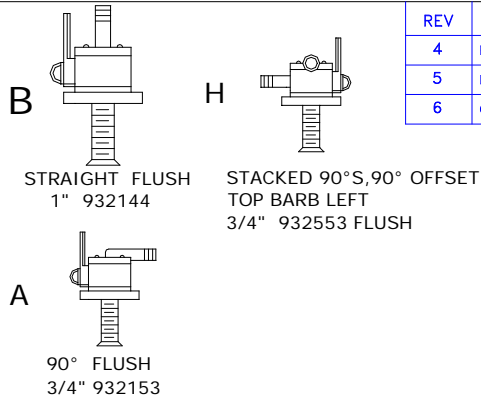
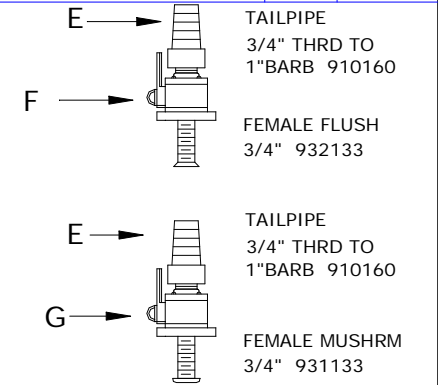


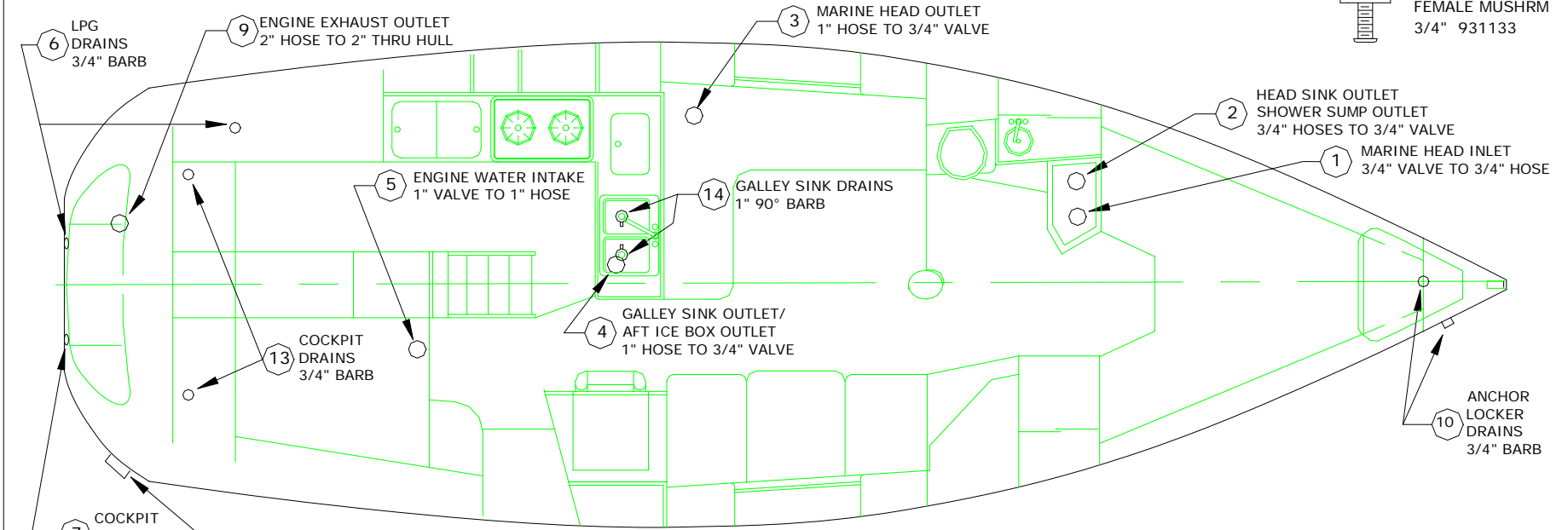
PARTS LIST						
NO.	ITEM	SIZE	TYPE	CAT. PART #	QTY.	
1	MARINE HEAD INLET	3/4"	A	60334	1	
2	HEAD SINK OUTLET & SHOWER SUMP OUTLET	3/4"	H	60434	1	
3	MARINE HEAD OUTLET --- MUSHROOM	3/4"	G&E	60412/	1	
4	GALLEY SINK OUTLET / AFT ICE BOX OUTLET	3/4"	F&E	60337/	1	
** 5	ENGINE WATER INTAKE	1"	B	60654	1	
6	LPG DRAINS	FORESPAR PART #	3/4"	906046	60098	2
7	COCKPIT OUTLET	FORESPAR PART #	1"	906047	60431	1
8	BILGE OUTLET	FORESPAR PART #	1 1/2"	906030	60057	1
** 9	ENGINE EXHAUST DRAIN	FORESPAR PART #	2"	906034	60453	1
10	ANCHOR LOCKER DRAINS	FORESPAR PART #	3/4"	906046	60098	2
11	ANTI SIPHON VALVE	FORESPAR PART #	3/4"	903001	60048	2
** 12	WATER STRAINER	FORESPAR PART #	1 1/2"	906066	50092	1
13	COCKPIT DRAINS	FORESPAR PART #	3/4"	906046	60098	2



REV	DESCRIPTION	APRVL	DATE
4	ENGINE INTAKE NOW STRAIGHT, WAS 90		12/19/03
5	NEW CAT. PART # FOR ENGINE INTAKE (was 60332)		2/3/04
6	CHANGED ITEM 13, & ENGINE PARTS SEPARATE		4/27/04



44



NOTE:  
 1. 'E'--'F' AND 'E'--'G' COME ASSEMBLED AS SHOWN.  
 \*\* BOXED (OR BAGGED) TOGETHER FOR ENGINE KIT

14	GALLEY SINK DRAIN 1" 90°	FORESPAR #	1"	907017	60190	2

PROPRIETARY INFORMATION  
 THE DESIGNS, INFORMATION, AND DATA CONTAINED HEREIN ARE PROPRIETARY AND ARE SUBMITTED IN CONFIDENCE, AND SHALL NOT BE DISCLOSED, USED, OR DUPLICATED, IN WHOLE OR IN PART, FOR ANY PURPOSES WHATSOEVER, WITHOUT THE PRIOR WRITTEN PERMISSION OF CATALINA YACHTS, 21200 VICTORY BLVD. WOODLAND HILLS, CALIFORNIA 91367. THIS LEGEND SHALL BE MARKED ON ANY REPRODUCTIONS HEREOF IN WHOLE OR IN PART. RECEIPT OF THIS DOCUMENT SHALL BE DEEMED TO BE AN ACCEPTANCE OF THE CONDITIONS SPECIFIED HEREIN.

21200 VICTORY BLVD.  
WOODLAND HILLS, CA.  
91367-(818)884-7700

SCALE: NONE	APPROVED BY:	DRAWN BY K.W.N.
DATE: 5/21/01		REVISED 4/27/04
THRU HULL LOCATIONS		
BOAT: <b>CATALINA 36 MKII</b>		DRAWING NUMBER 360-60008-6